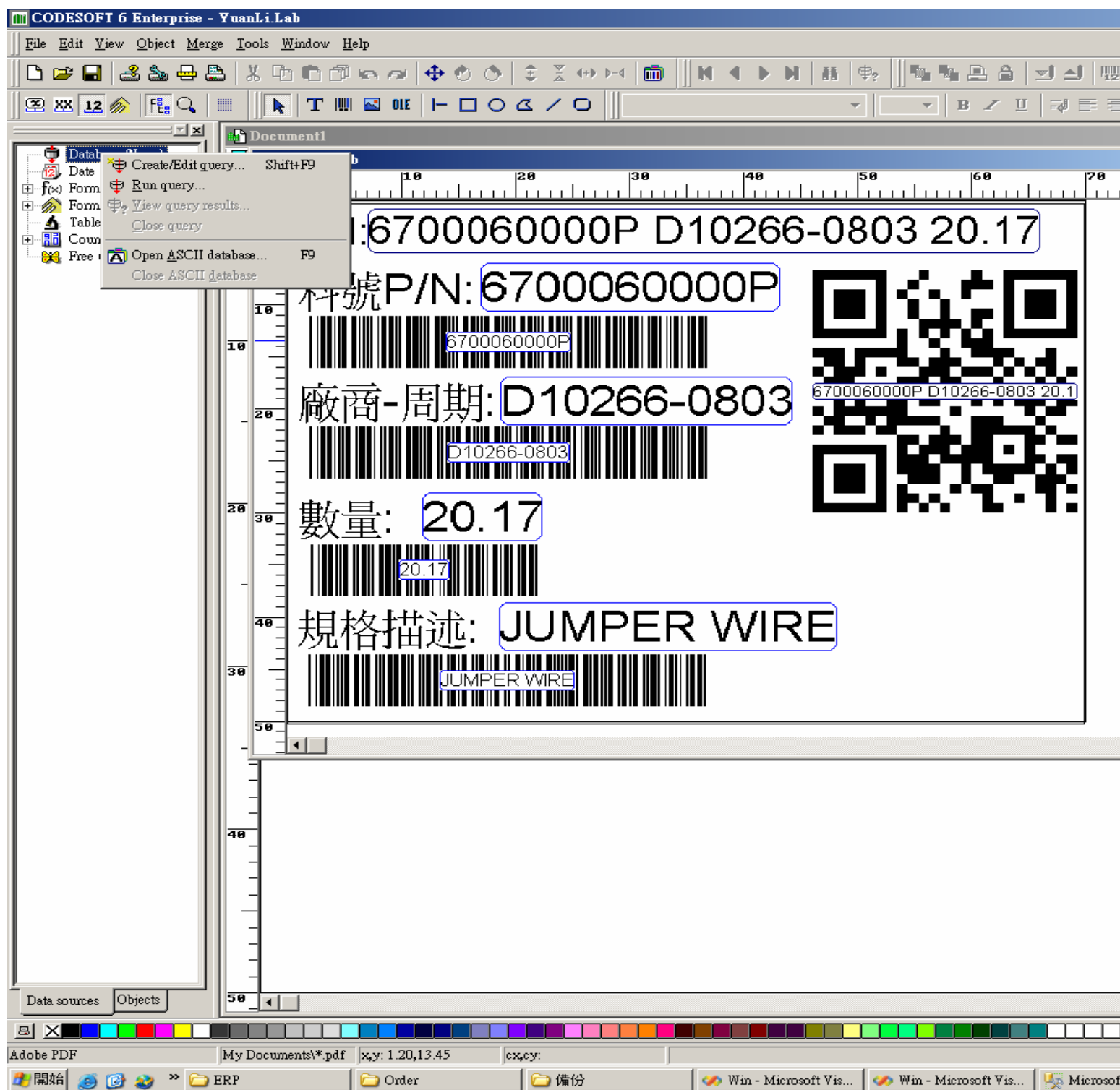


右点击 Database——>点击 Create/Edit query :



弹出如下界面: 选择或创建新的数据源

显示text和barcode的数据的所占大小

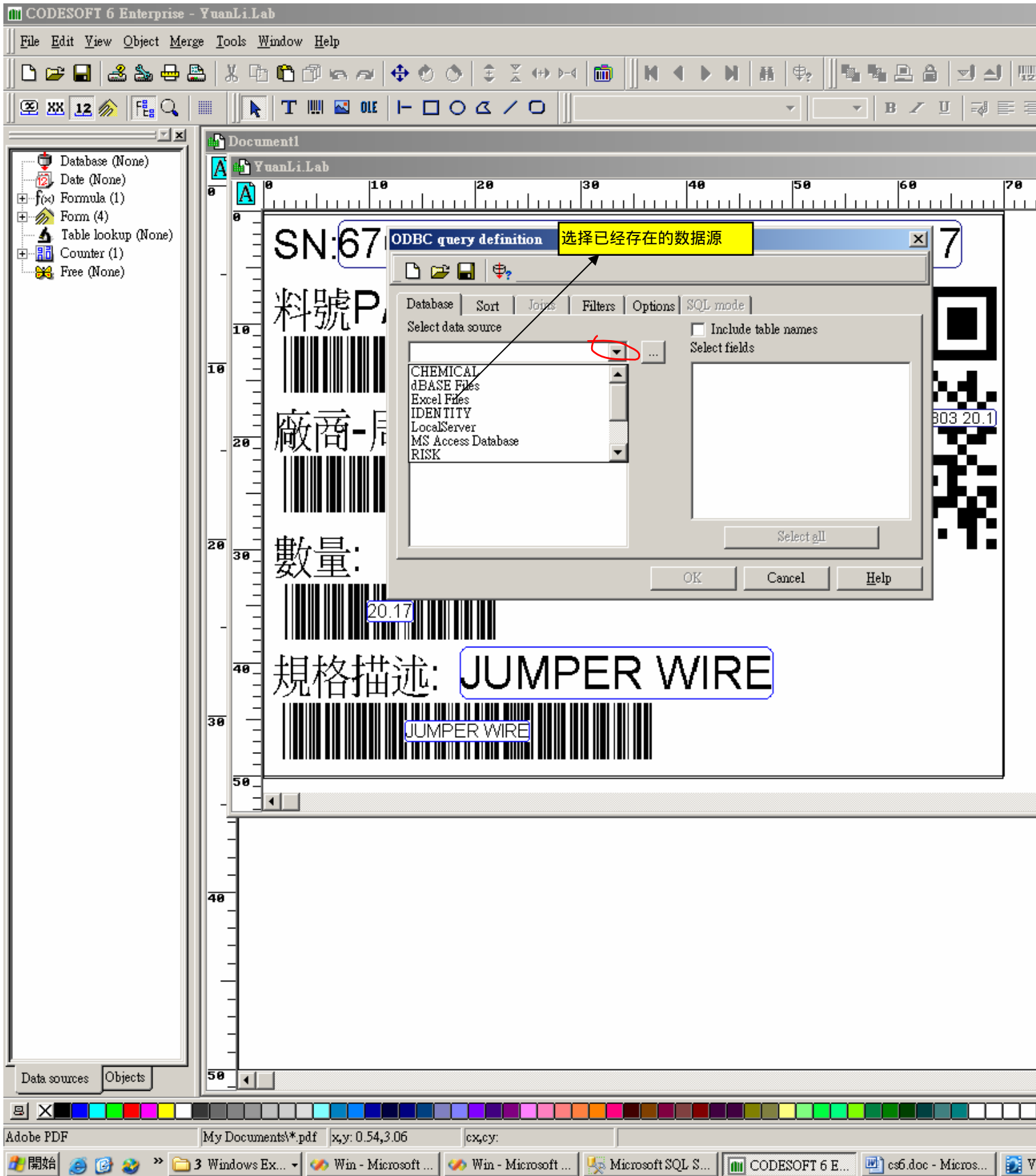
显示内容

显示变量

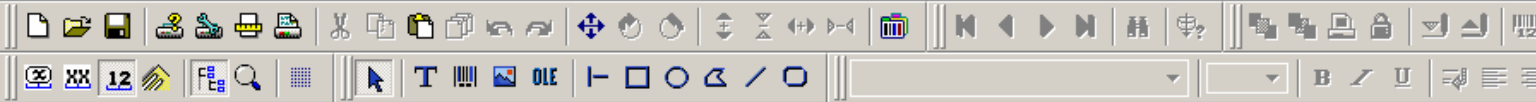
选择数据源

产生新的数据源

The image shows a screenshot of the CODESOFT 6 Enterprise software interface. The main window displays a label design for 'YuanLi.Lab' with various fields and barcodes. The fields include 'SN:67', '料號P', '廠商-居', '數量: 20.17', and '規格描述: JUMPER WIRE'. There are also two barcode fields, one with '303 20.1' and another with 'JUMPER WIRE'. A QR code is visible on the right side of the label. An 'ODBC query definition' dialog box is open in the center, showing options for 'Database', 'Sort', 'Joins', 'Filters', 'Options', and 'SQL mode'. The 'Select data source' field is highlighted with a red circle, and a red arrow points to it from the '选择数据源' label. Another red arrow points to the '...' button next to the 'Select data source' field, labeled '产生新的数据源'. The software interface includes a menu bar (File, Edit, View, Object, Merge, Tools, Window, Help), a toolbar with various icons, and a left-hand pane with a tree view of objects like 'Database (None)', 'Date (None)', 'Formula (1)', 'Form (4)', 'Table lookup (None)', 'Counter (1)', and 'Free (None)'. The bottom of the screen shows a Windows taskbar with several open applications, including 'ERP', 'Order', '备份', 'Win - Microsoft ...', and 'Microsoft SQL S...'. A color calibration bar is visible at the bottom of the software window.



选择数据源中的表和表中有用的字段:



Document1

YuanLi.Lab

- Database (None)
- Date (None)
- Formula (1)
- Form (4)
- Table lookup (None)
- Counter (1)
- Free (None)

Data sources Objects

SN:67
料號P
廠商-
數量: 20.17
規格描述: JUMPER WIRE

ODBC query definition 选择数据源中的表

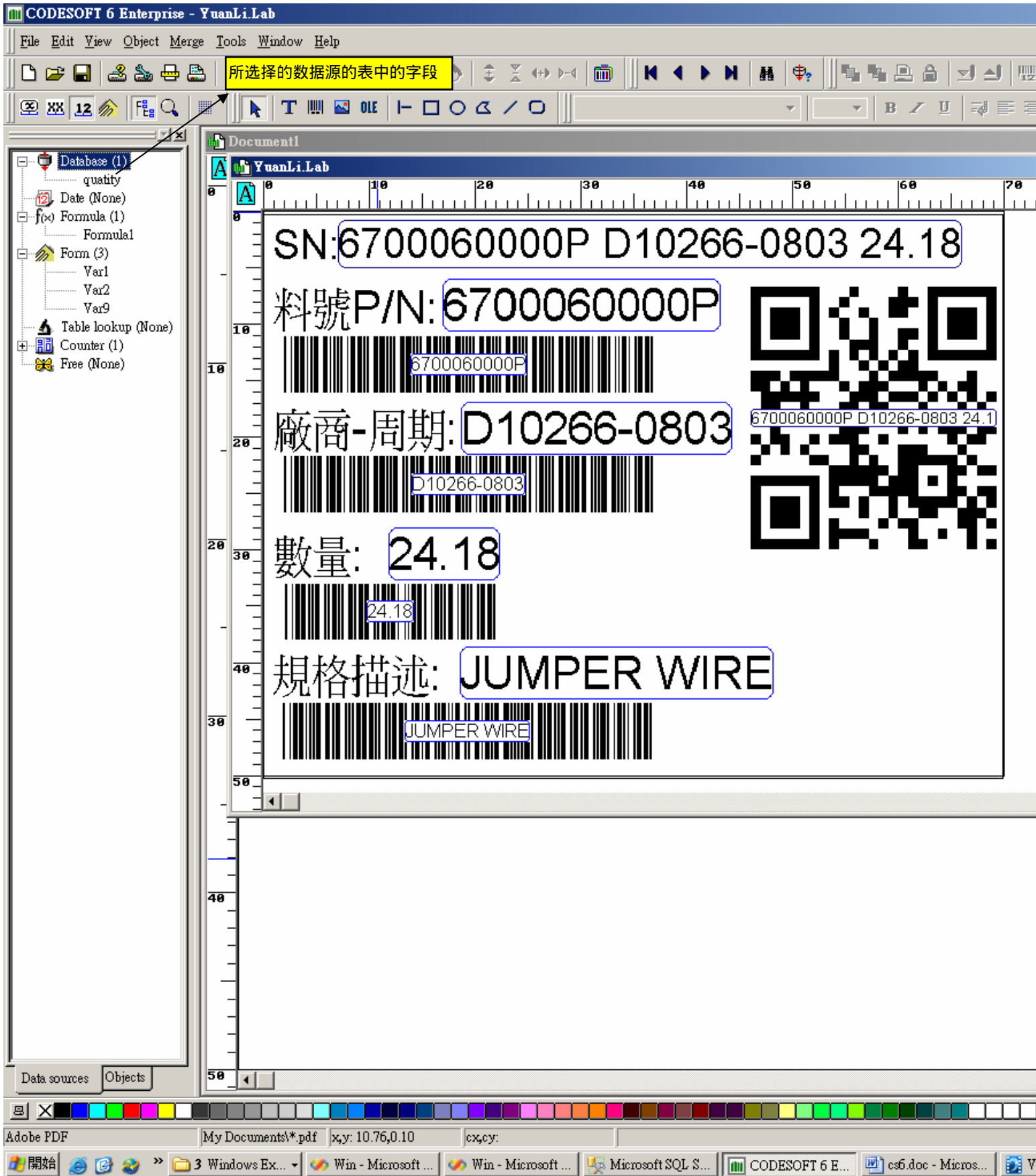
选择数据源中的表中的字段

Database: Excel Files
Select table(s): 2008年4月(2)\$
Select fields: liao hao, chang sheng zhou qi, quantity, specification, 送??, 采购单就, 供应商, 完成日期, 备注

303 20.1

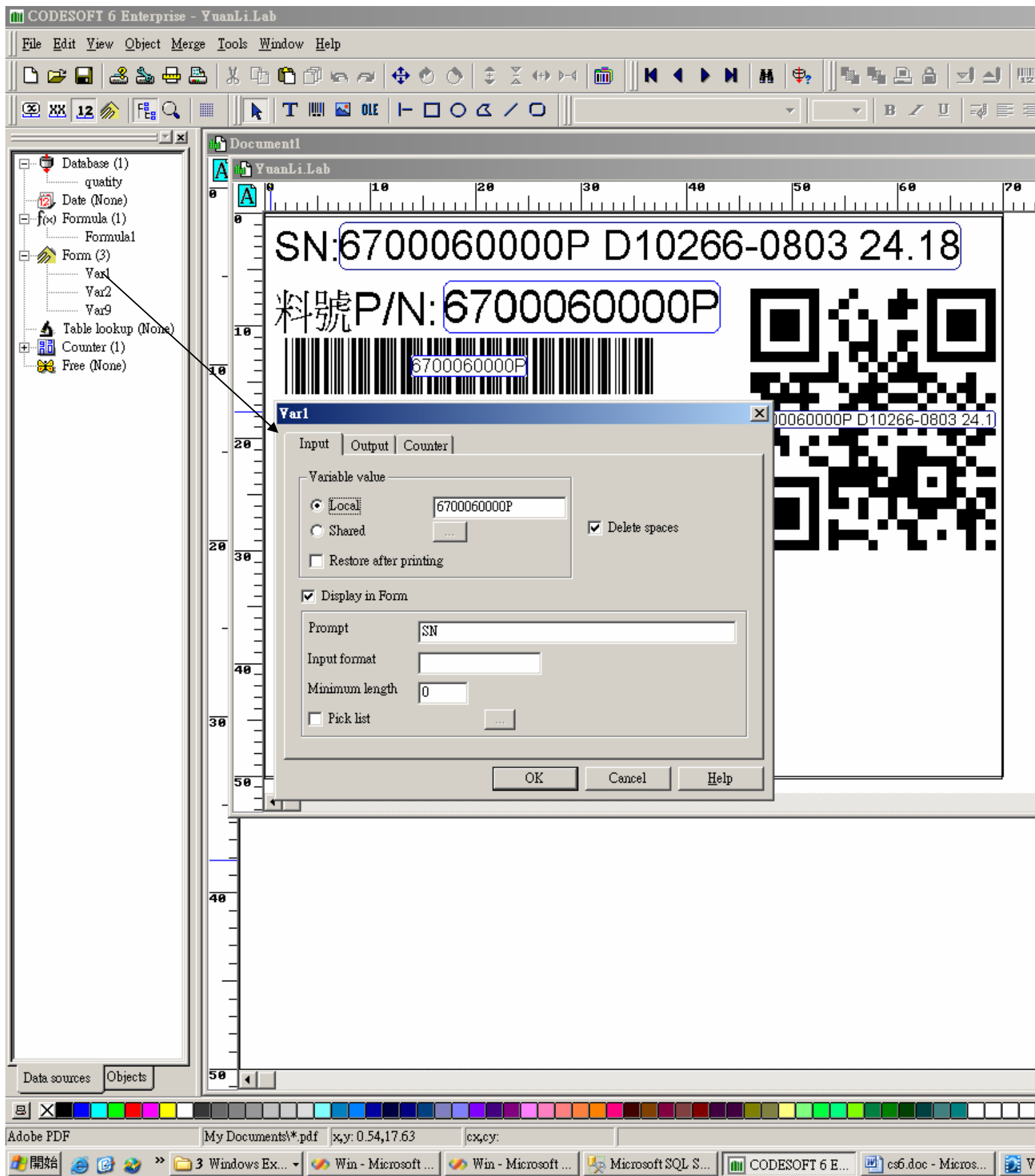
JUMPER WIRE





选择完表及表中的字段,Database 就存储 Excel 中的列变量;在 Formula 中建立公式(由 Database 中的字段和 Form

及特殊字符组成);在 Form 中建立常量;在 Counter 中建立一个计数器;





- Database (1)
 - quantity
- Date (None)
- Formula (1)
 - Formul1
- Form (3)
 - Var1
 - Var2
 - Var9
- Table lookup (None)
- Counter (1)
 - Counter0
- Free (None)

Document1

YuanLi.Lab

SN: 6700060000P D10266-0803 24.18

Formul1


Formula Output Counter

Var1&char(32)&Var2&char(32)&quantity

Constants
Functions
Check caracte
Conversion
Date and time
Logical
Math
Text
Operators
Variables


&	/	*	-	Test
7	8	9	+	Undo
4	5	6		Insert
1	2	3	(
0	.)		

OK Cancel Help



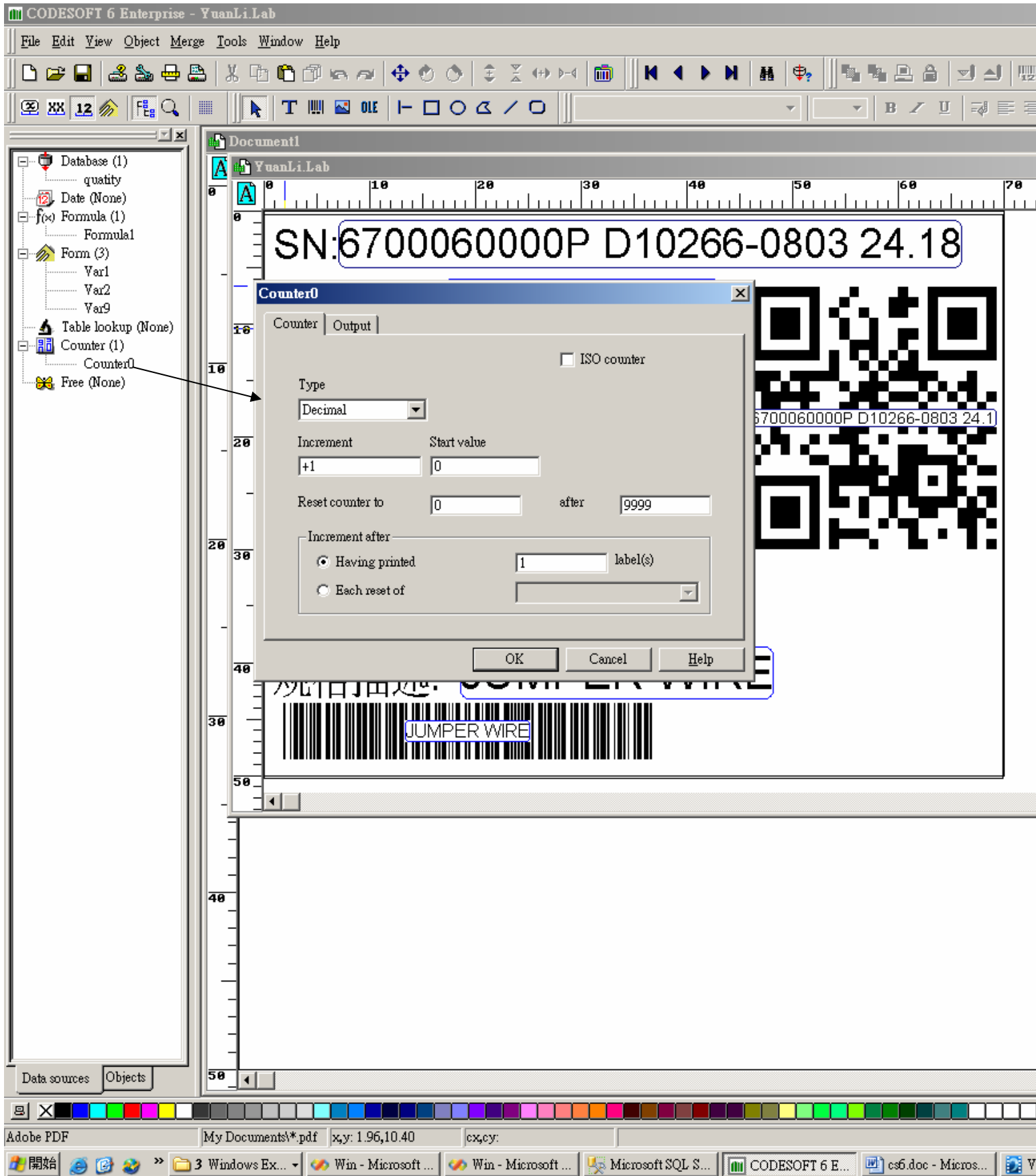
6700060000P D10266-0803 24.1

况作由地. JUMPER WIRE

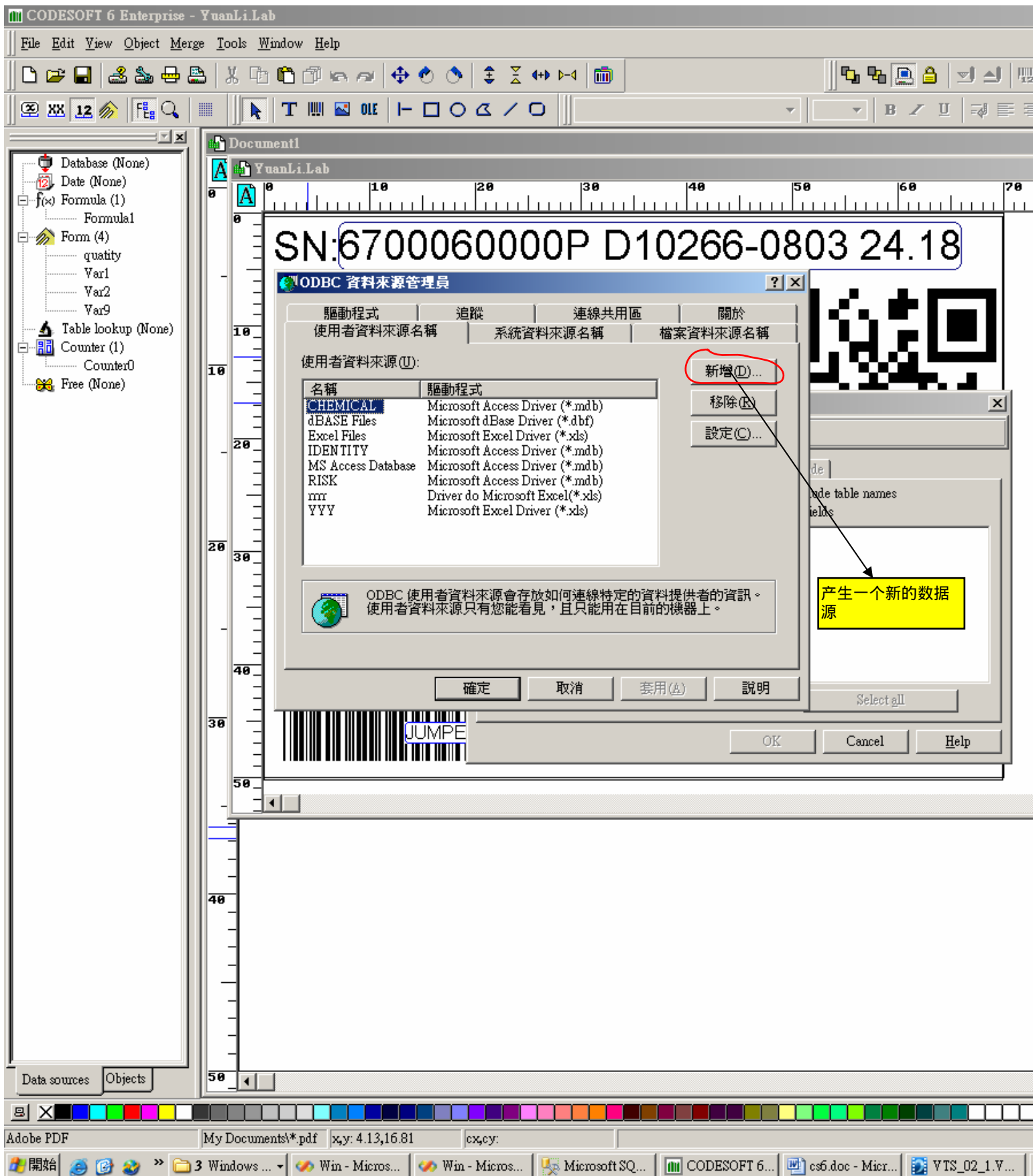


JUMPER WIRE

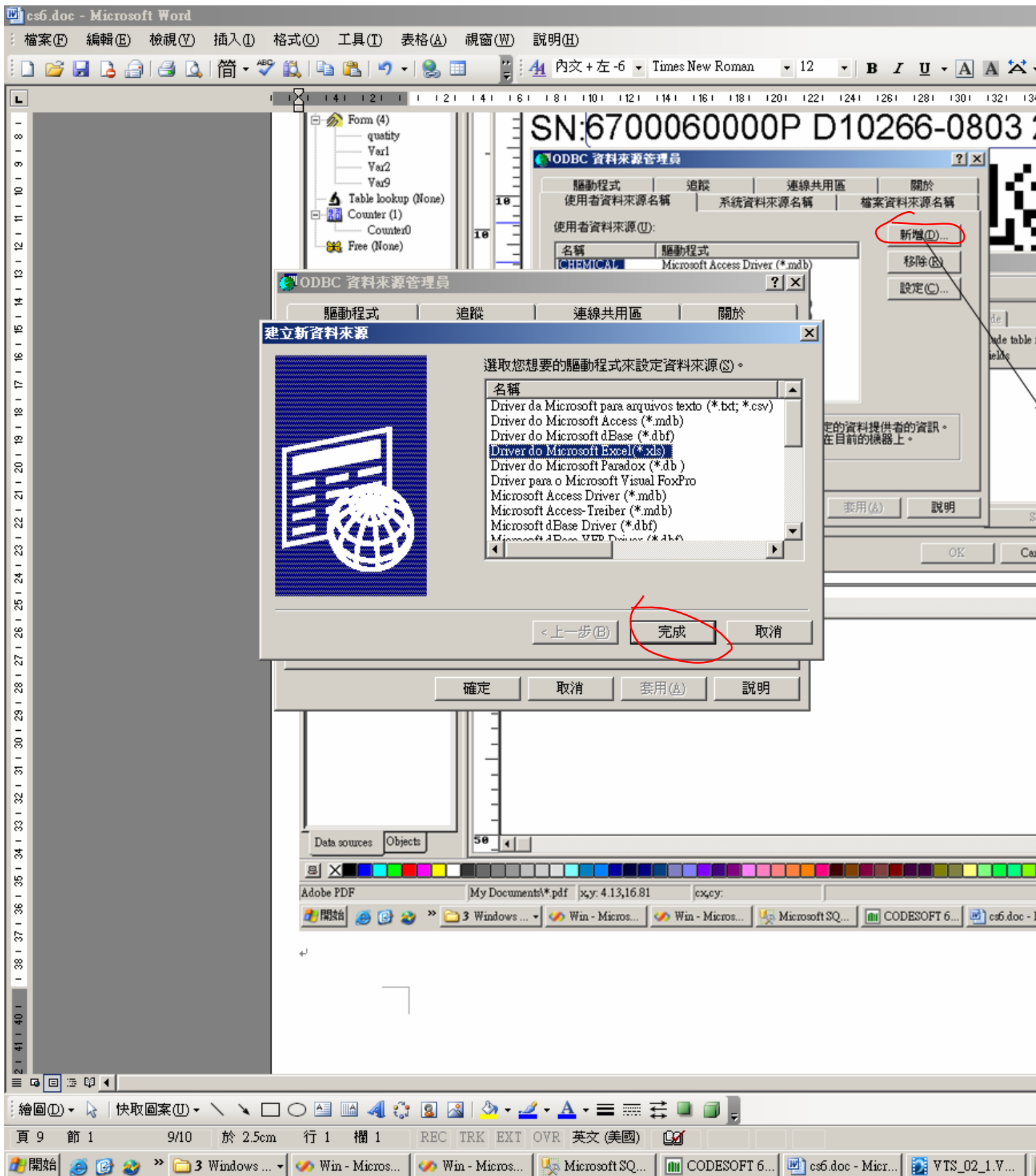




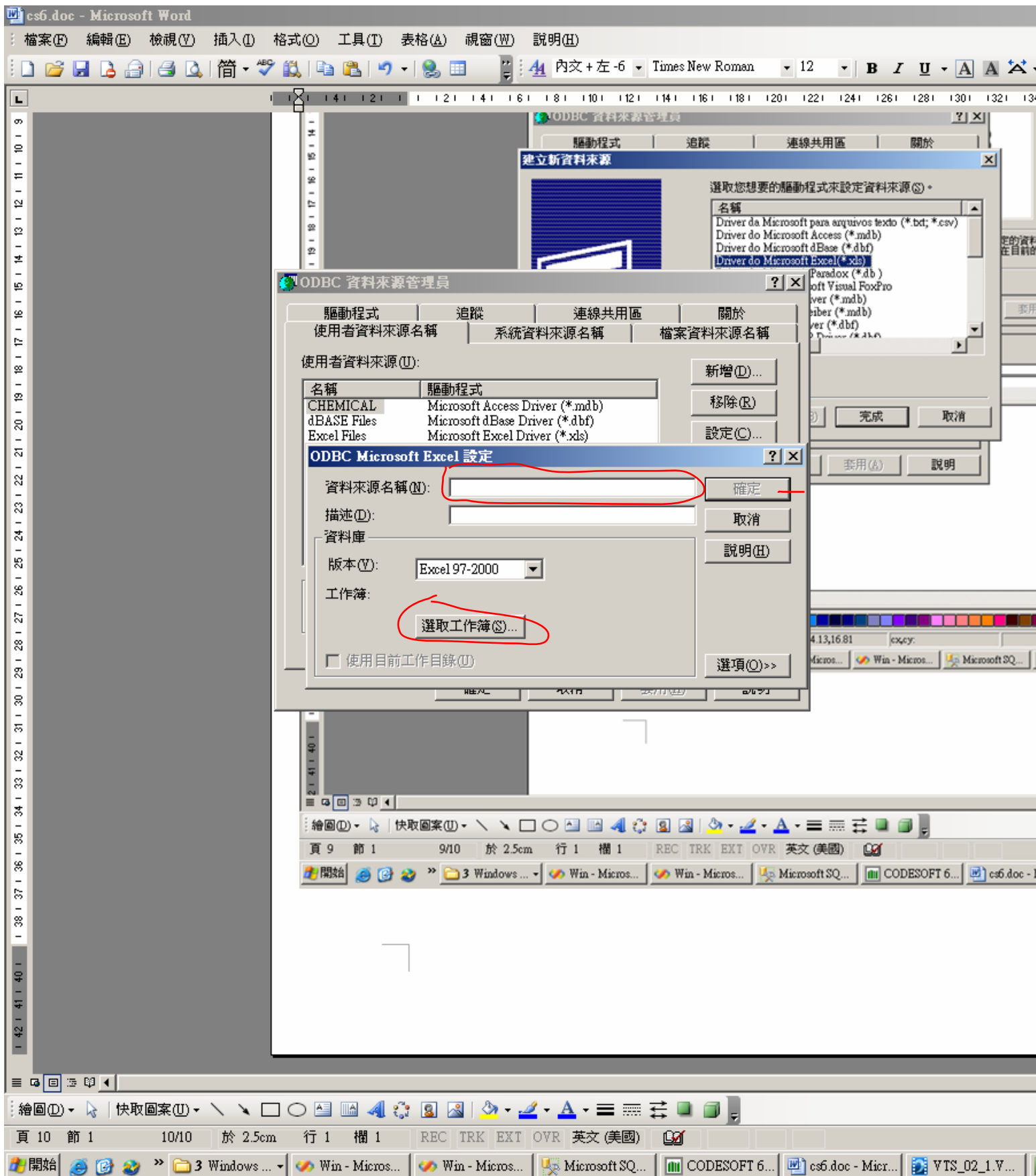
如果没有存在数据源,则新增一个数据源



弹出新增数据源对话框:



点击过完成后,填写新增数据源的名称和选取所需的工作表:



最后把 Text 和 Barcode 的属性的 data source 设为相应的变量,常量或公式